

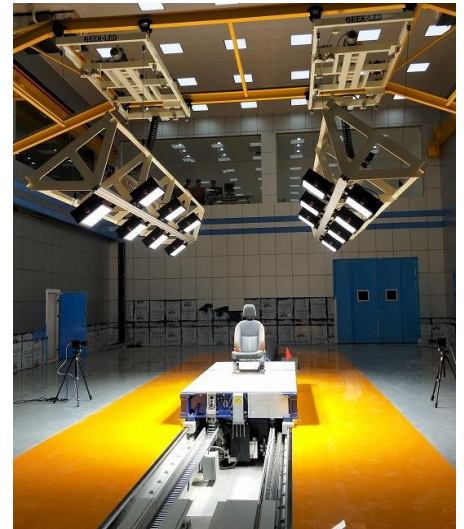
July 13, 2018

## TACHI-S Chinese Testing Center Inauguration Ceremony First collision testing machine introduced to our group company in the China region

TACHI-S Engineering Zhengzhou Co., Ltd. (President: Wang Dongcheng), one of the Chinese subsidiaries of TACHI-S Co., Ltd. (President, CEO & COO: Taro Nakayama, Headquarters: Akishima, Tokyo), introduced a sled machine (collision testing machine) for the first time among our group companies in the China region, and held the inauguration ceremony on July 11, 2018, in Henan Zhengzhou city, to celebrate the start of operations.

Government officials, customers, and suppliers were invited to the inauguration ceremony, and President, CEO & COO Taro Nakayama and the Chief of Monozukuri Headquarters Mitsuo Shimazaki (SEO & Member of the Board) attended from TACHI-S Japan. In his speech at the ceremony, President Nakayama said "I declare Zhengzhou as our strategic priority area and will continue developing it as our Monozukuri center for the TACHI-S China region. Our vision aims for this center to play the role of a Global TACHI-S Monozukuri center in the future."

This was the third sled machine introduced to our group companies following Japan and Mexico. By conducting testing in those three sites, we will build a foundation of a global system for on-demand development, and respond to customer's requests in a timely manner.



### ■ Outline of the building the sled machine

Location : Southwest Corner of Automobile Industrial Park, Intersection of Jianshe Road and 4<sup>th</sup> Wei Road, Zhongmou County, Zhengzhou City, Henan Province, China (On the premises of TACHI-S Engineering Zhengzhou Co., Ltd.)

Gross floor area : 1,456 m<sup>2</sup> (Gross floor area of the company: 5,043 m<sup>2</sup>)

Site area : 1,872 m<sup>2</sup> (Site area of the company: 3,457 m<sup>2</sup>)

Operation start date : July 1, 2018 (Establishment of the company: December 11, 2015)

### ■ Inquiries

Company Name: TACHI-S Co.,Ltd.  
Address: 3-3-7 Matsubara-machi, Akishima-shi, Tokyo  
Telephone: +81-42-546-8111 (General Affairs Section, General Affairs Department)  
FAX: +81-42-546-7361  
URL: <http://www.tachi-s.co.jp/>